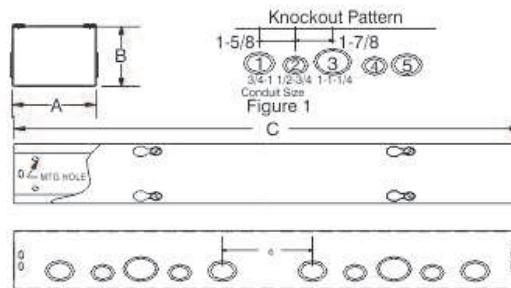


## WIREWAYS & FITTINGS



Wiring troughs are used as junction or pull boxes and are suitable for surface mounting with a screw cover. Troughs and covers are made from 14 or 16 GA steel. For internal mounting holes and bonding screw and attachment are provided. All two sides have concentric knockout per feet length (Fig-1) except as noted. Boxes and covers are finished with heat fused polyester powder electrostatically applied in a phosphatized base in grey colour.



Model Number	Dimensions			Model Number	Dimensions		
Section	A	B	C	Section	A	B	C
<b>MD MT 22</b>				<b>MD MT 88</b>			
MD MT 221	2½	2½	12	MD MT 881	8	8	12
MD MT 222	2½	2½	24	MD MT 882	8	8	24
MD MT 223	2½	2½	36	MD MT 883	8	8	36
MD MT 224	2½	2½	48	MD MT 884	8	8	48
MD MT 225	2½	2½	60	MD MT 885	8	8	60
<b>MD MT 44</b>				<b>MD MT 1010</b>			
MD MT 441	4	4	12	MD MT 10101	10	10	12
MD MT 442	4	4	24	MD MT 10102	10	10	24
MD MT 443	4	4	36	MD MT 10103	10	10	36
MD MT 444	4	4	48	MD MT 10104	10	10	48
MD MT 445	4	4	60	MD MT 10105	10	10	60
<b>MD MT 66</b>				<b>MD MT 1212</b>			
MD MT 661	6	6	12	MD MT 12121	12	12	12
MD MT 662	6	6	24	MD MT 12122	12	12	24
MD MT 663	6	6	36	MD MT 12123	12	12	36
MD MT 664	6	6	48	MD MT 12124	12	12	48
MD MT 665	6	6	60	MD MT 12125	12	12	60

## WIREWAYS & FITTINGS



All accessories are made from 14 or 16 gauge steel and designed to permit fast and easy installation of multiple wire runs. All accessories for a complete system such as 45 and 90 degrees Elbows, Crosses, Tee's, U-jointers etc are readily available. All the components are finished with heat fused polyester powder electrostatic ally applied on Phosphated base in grey colour.

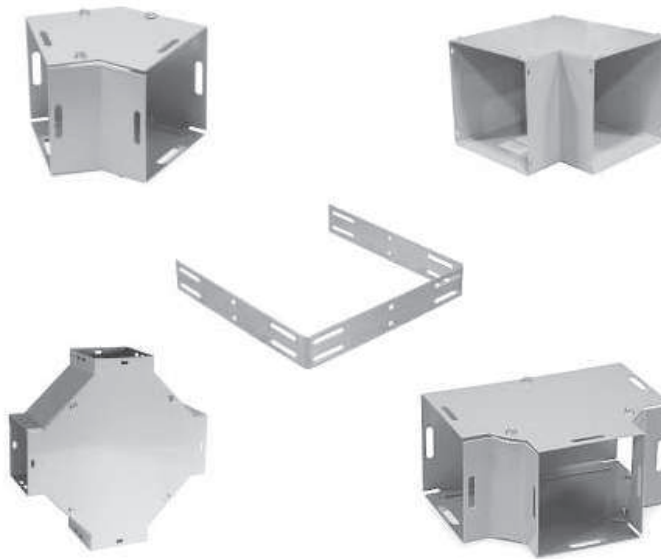


Fig:- Shows various types of fittings used in Wire Ways

Model Number	Dimensions			Model Number	Dimensions		
Section	A	B	C	Section	A	B	C
<b>Elbow - Fittings</b>				<b>Cross - Fittings</b>			
MD EL 22 90	2½	2½	4.68	MD CROSS 22	2½	2½	3.5
MD EL 44 90	4	4	6.2	MD CROSS 44	4	4	8.0
MD EL 66 90	6	6	8.2	MD CROSS 66	6	6	10.0
MD EL 88 90	8	8	10.2	MD CROSS 88	8	8	12.0
MD EL 10 10 90	10	10	12.2	MD CROSS 10 10	10	10	14
MD EL 12 12 90	12	12	14.2	MD CROSS 12 12	12	12	16.0
MD EL 22 45	2½	2½		<b>End - Fittings</b>			
MD EL 44 45	4	4		MD END 22	2½	2½	3.5
MD EL 66 45	6	6		MD END 44	4	4	8.0
MD EL 88 45	8	8		MD END 66	6	6	10.0
MD EL 10 10 45	10	10		MD END 88	8	8	12.0
MD EL 12 12 45	12	12		MD END 10 10	10	10	14
<b>Tee - Fittings</b>				MD END 12 12	12	12	16.0
MD TEE 22	2½	2½	3.5	<b>U-Con - Fittings</b>			
MD TEE 44	4	4	8.0	MD U-CON 22	2½	2½	3.5
MD TEE 66	6	6	10.0	MD U-CON 44	4	4	8.0
MD TEE 88	8	8	12.0	MD U-CON 66	6	6	10.0
MD TEE 10 10	10	10	14	MD U-CON 88	8	8	12.0
MD TEE 12 12	12	12	16.0	MD U-CON 10 10	10	10	14
				MD U-CON 12 12	12	12	16.0